

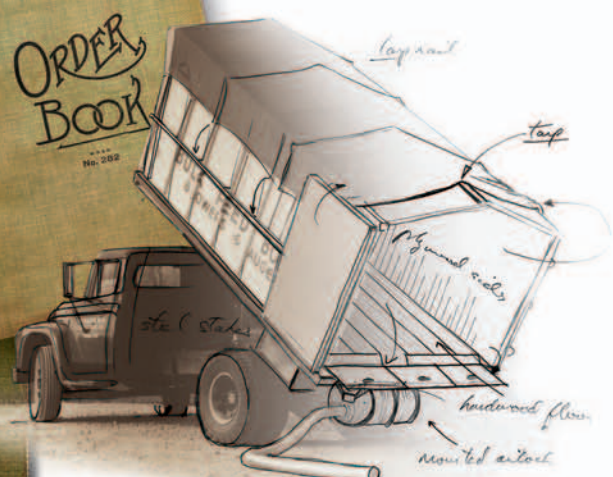
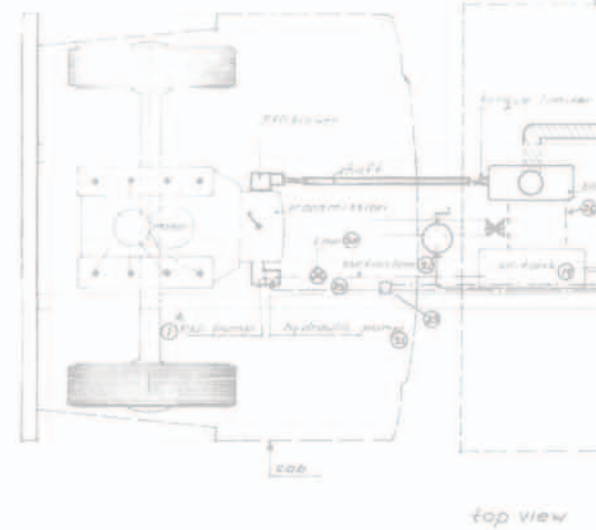


28	FLOW DIV	CPD 75-4
29	HP HOSE	100 #2-3/4
30	HP HOSE	100 #2-3/4
31	SHOWER	MA-127
32	CONTROL	SP-3
33	AIR CHANGE	SP-4
34	CONTROL	SP-4D
35	SPRINK VALVE	
36	SPR-SD	CONTROL
37	CONTROL	SP-4
38	CONTROL	SP-3-3-0
39	CONTROL	SP-3D-4D

**WALINGA**<sup>®</sup> INC.  
 Since **50** 1954  
**ENGINEERED TRANSPORTATION EQUIPMENT**

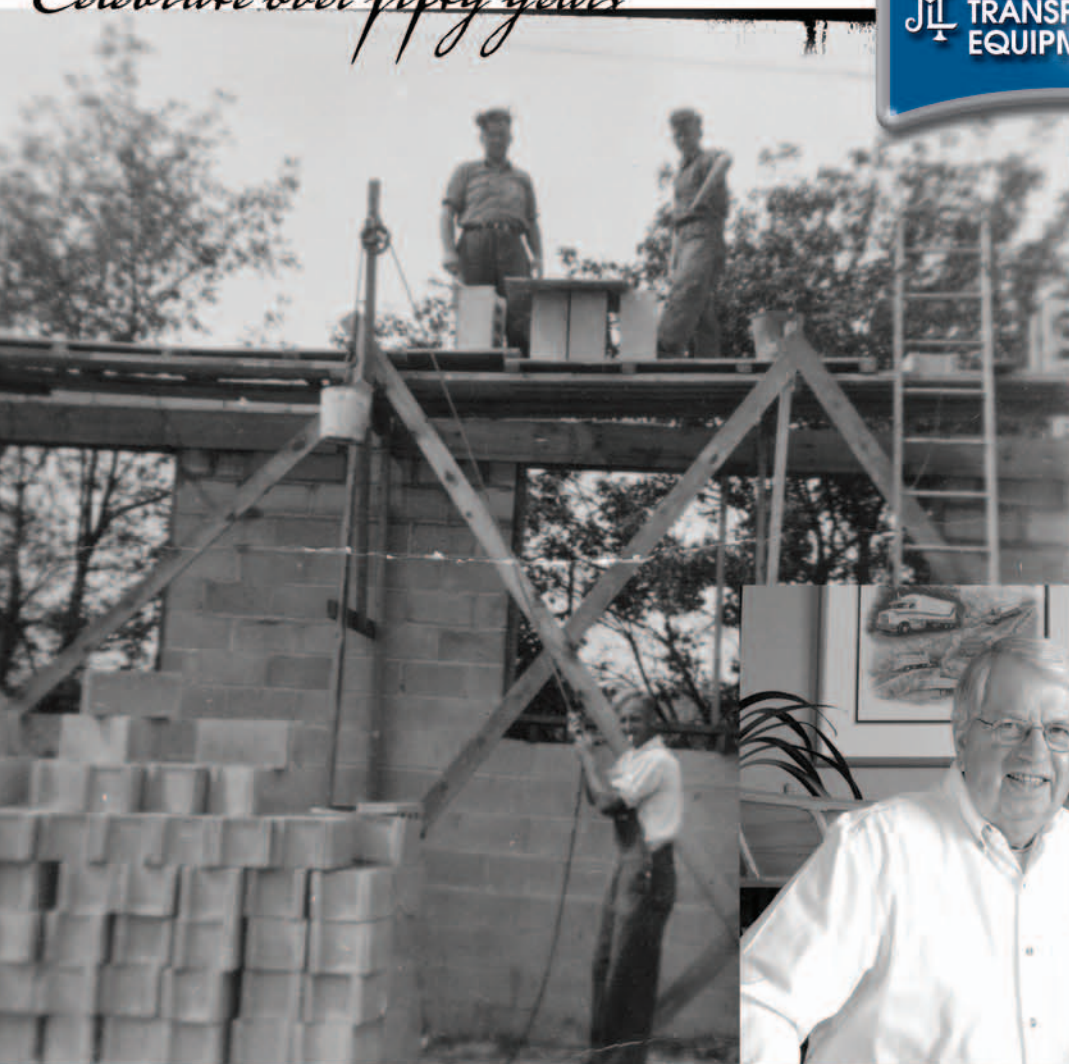
1954 - 2004...

*fifty years of engineering excellence*





*Celebrate over fifty years*



Robert Lodder

John Medemblik, President

First known as Commercial Body & Coach in 1954, Cornelius Walinga and John Medemblik soon realized that the strong foundation of the company ought to be built on the family name, renaming it 'Walinga Body & Coach'.

Using the slogan "BUILDING ANY BODY FOR ANYBODY", Case Walinga and John Medemblik began handcrafting wooden truck bodies for local businesses. Robert Lodder joined them in 1959, creating a partnership where uncompromised attention to detail and a very personal commitment to customer service has become tradition.

In 1969, Robert Lodder and John Medemblik purchased the shares of Case Walinga and continued for many years as partners.



First Order book, 1954

# WALINGA



first sales manual, 1954



company origin, 1930's - Hay Wagons

FERGUS, ONT., TELEPHONE 958

- \* MANUFACTURERS OF
- \* STAKE BODIES
- \* ALUMINUM AND
- \* METAL VAN BODIES
- \* PLATE GLASS CABINETS
- \* TRAILERS
- \* TANKER BODIES
- \* ROLLER BODIES
- \* SCHOOL BODIES
- \* WAGON BODIES





**ENGINEERED  
TRANSPORTATION  
EQUIPMENT**



The strength of Walinga will always be the people that help bring it all together, the ones behind the scenes and those in front of our customers. Our employees have a strong and high level of dedication which helps keep issues clear and simple, understanding the customer's needs or exceeding the client's expectations.



first aluminum  
manufactured  
pressure/vacuum unit

From the small beginning of the two founders to a workforce of more than 200 in 4 locations, Walinga has grown with its clients and the industry they serve.

2. Light & dark wood  
 1. Darker light wood  
 1. Rounder light wood  
 1. Rounder light wood  
 1. 3 very round light



original  
AL1314 airlock

40 years service



custom  
built

WALINGA<sup>®</sup> INC.

Put the walinga air force to work for you

Priced so competitively, you'll wonder you've done without one for so long

**walinga**

Over 23 years of experience in the design, development, production and distribution of high quality, custom built, heavy duty vehicles. Our products are built to last and are designed to meet the most demanding conditions. We are a family owned and operated business and we pride ourselves on the quality of our products and the service we provide to our customers.

Over 23 years of experience in the design, development, production and distribution of high quality, custom built, heavy duty vehicles. Our products are built to last and are designed to meet the most demanding conditions. We are a family owned and operated business and we pride ourselves on the quality of our products and the service we provide to our customers.

From concept, design and through production, Walinga meets the customer's needs at every step. Creating outstanding products that are innovative and durable, with some client's vehicles being passed from generation to generation.



Comprehensive engineering capabilities allow us to offer sizes, capacities, features and options that are specifically job-matched according to individual requirements.

The services of our Engineering Department are available to our customers to assist in the selection of the properly specified chassis. Every Walinga vehicle is designed and produced to best fulfill its designated function.



**WALINGA BODY & COACH LIMITED**

ontario - canada  
area code 519  
WALINGA, BRUNTRUCK

824-8220

**WALINGA**

16 Can. 53	53
17/2/14	50
7/2/14	580
Walinga 50	-
8/2/14	44
10/2/14	2640
Richard 1845	-
Chris 19	-
Paul 149105	-
150	-
15061	-
152	-
26	-
50	-



**IN**

**WALINGA<sup>®</sup>**  
INC.

**Agri-Vac<sup>®</sup>**

Smith Grain Vac Service, Dresden, ON.

**"...the only way to prove it, is by operating the equipment day in and day out."**

This is what sets Walinga apart, "strong service and warranty support" because no one can afford the down time!





**3510**  
*America's*  
**Nº 1**  
**GRAIN MOVER!**

Walinga Agri-Vac, an icon in the agricultural industry, first came on to the scene in 1977. As the industry grew, Walinga rose to the challenge by introducing a range of models and sizes designed to meet the growing needs.

8614 Double Blower 100 t.p.h.



first 614 diesel



model 506 Agri Vac



Walinga's 50 year celebration means a great deal to each member of our organization. From the modest beginning of two employees to our present staff of 200 plus, one thing remains unchanged - The Walinga tradition of customer service and product superiority.

Our anniversary is an occasion during which we celebrate our past blessings and continued growth.





**ENGINEERED  
TRANSPORTATION  
EQUIPMENT**

Nº 1072

**WORK - ORDER**

PLEASE NOTE: All who work on this order must list your total time spent on this order in the space below.

DATE OF ORDER: \_\_\_\_\_

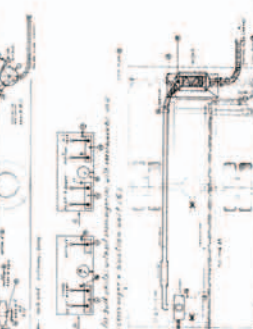
Type of Unit	Tr. Make	Employee's Name
Length:	Tr. Model #:	
Width:	P.L.O.#:	
Height:	P.T.O.#:	

**WHAT'S A  
WALINGA  
???**

**WALINGA**  
INC.



it's about  
our  
commitment



Nº 1072

[www.walinga.com](http://www.walinga.com)



Nº 10



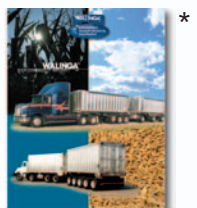
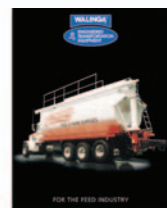
Walinga adheres to one clear and simple mandate: The customer must be completely satisfied. From initial contact, to delivery, to future service - we guarantee accessibility, professional expertise and meticulous attention to detail.





Custom-built aluminum feed bodies and trailers,  
pneumatic conveying systems, recycling and rendering units,  
each built according to exacting standards.

## TRANSPORTATION



Every stage of the manufacturing process from design to completion is performed by Walinga.

## WASTE MANAGEMENT



The customer benefits from a cost-effective,  
durable product line that responds to any challenge  
with premium performance.

## PNEUMATIC CONVEYING SYSTEMS



\*

Nº 1029

[www.walinga.com](http://www.walinga.com)



Nº 15



## Vision Statement

We intend to fulfill our Christian mandate by manufacturing customized products of the highest quality at the fairest price. We do this through efficiency, organization and innovation in an environment that includes all employees. For our customers, we guarantee accessibility, professional expertise and meticulous attention to detail. Our total commitment to quality is not only our inheritance, it is our foundation for the future. Through this we expect to see continued growth for future generations, that they may continue on the path set before them.



